

Thermographic Camera Kit

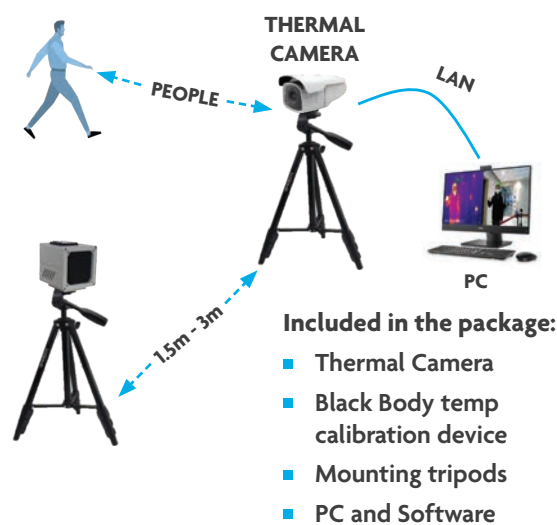
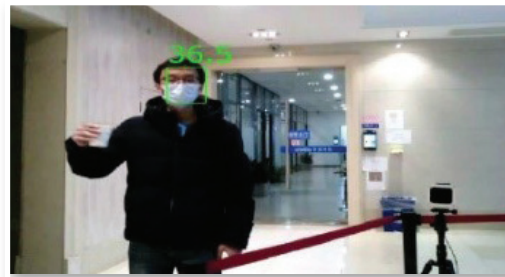
For Screening Elevated Body Temperature



Thermographic cameras provide entry-exit health quarantine for facilities with a high volume of foot traffic. Thermal body temperature cameras are simple to setup, operate and detect people with elevated body temperatures before they enter your premises.

Key Features

- The intelligent camera detects faces wearing masks to avoid false alarms
- Multi-target Face Detection enables quick screening of required areas and reduced false alarms of other objects
- Alarm Face Capture will alert you for immediate action and store the real-time image for later evaluation
- Quick and easy Inspection Channel setup and versatile to move to a different location in your facility
- Little disruption to visitor flow
- The thermal imaging equipment uses passive detection of infrared radiation so there is no harm to the human body



Freephone: 131 539 | Email: api.service@allegion.com | www.131key.com.au

API Access & Security is an Allegion™ company